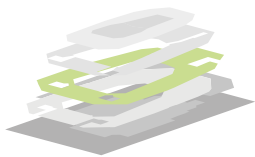


First floor | PLANET Zürcher Kantonalbank



The Zürcher Kantonalbank PLANET hovers up high in the Arena, looking over the exhibition area and a general-purpose stage in the Arena.



Room description

Seating options

Aperitif reception

Block seating

Concert seating

Floor space

Capacity

40 people

20 people

25 people

50 m²

Special facilities

The spectacular Zürcher Kantonalbank PLANET can be used for events on Tuesdays and Wednesdays and outside the official exhibition opening times

Technical facilities

Furniture

Charged for on a time and material basis

Wireless LAN



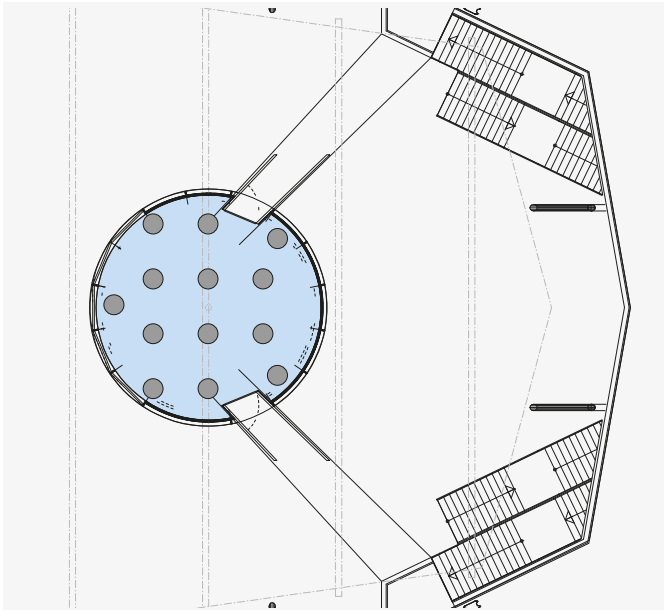
www.umweltarena.ch
www.facebook.com/umweltarena



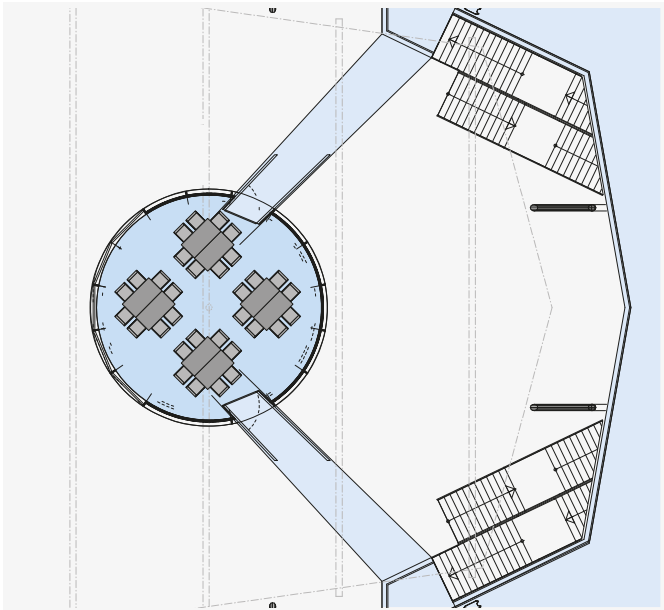
Patronat: Kanton Aargau. Mit Unterstützung der W. Schmid Projekte AG.
Hauptpartner:



SEATING EXAMPLES



Aperitif reception



Block seating

Notes

Lined area for notes.

Ground floor | SEMINAR ROOMS 1 TO 3 Heinrich Kuhn*



Suitable for meetings and seminars

Room description	Seating options	Capacity	(per room)
	Concert	40 people	
	Seminar	33 people	
	U-shaped formation	17 people	
	Banquet	35 people	
	Gala-style	25 people	
	Floor space	49 m ²	

Special facilities	The three rooms can be opened up and used as one big room measuring 147 m ²
	Seminar room 2 can be accessed from the outside
	All the rooms receive direct natural daylight

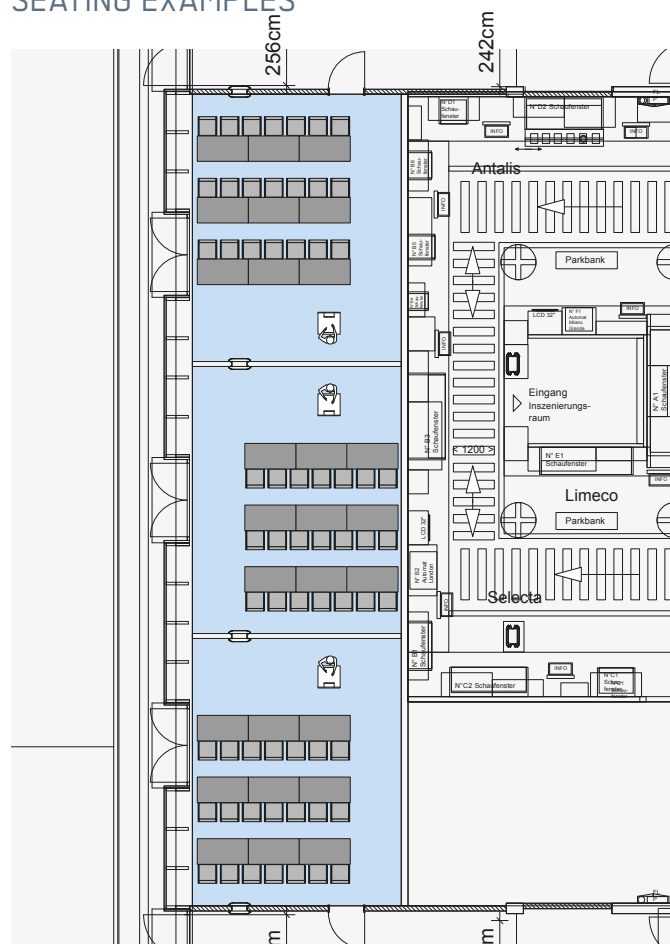
Technical facilities	1 Epson EB-915W video projector (3200 ANSI lumens)
	1 16:9 screen, 244 cm x 138 cm
	Projector
	1 Epson EB-915W video projector (3200 ANSI lumens)
	Screen
	1 16:9 screen, 244 cm x 138 cm
	Furniture
	Chairs and tables
	Wireless LAN



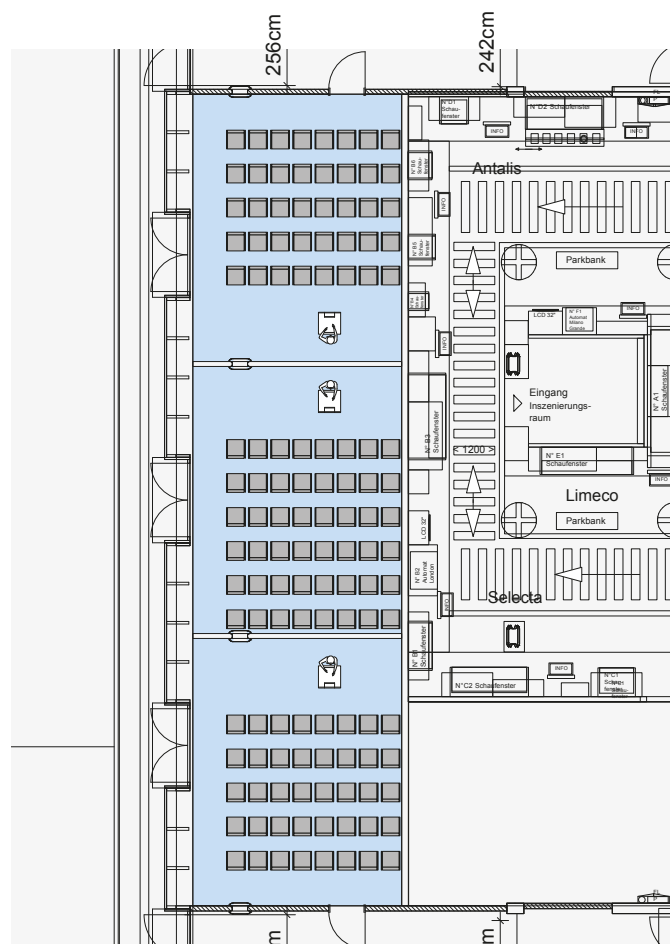
*Heinrich Kuhn

In 1926 Heinrich Kuhn bought the bankrupt copper and steel pan factory Gebr. Kindlimann (known locally as "Pfanni") and set up the Heinrich Kuhn Metallwarenfabrik metalworks. He developed the Duro brand of cookware, which was the first range of ovenware suitable for use on the up-and-coming electric hob, by using aluminium instead of copper or brass. The Heinrich Kuhn Metallwarenfabrik changed its name in 2001 to Kuhn Rikon AG. In 2006 the Museum of the History of Cooking was opened.

SEATING EXAMPLES



Seminar seating



Concert seating

Notes

Ground floor | SEMINAR ROOM 4 Maximilian Bircher-Benner*



Suitable for meetings with 10 to 18 people

Room description

Seating options

Concert

Capacity

40 people

Seminar

20 people

U-shaped formation

10 people

Block

18 people

Floor space

63 m²

Special facilities

The room receives direct natural daylight

There is a pillar in the middle of the room, making it suitable for relatively small meetings

Direct access to restaurant

Technical facilities

Epson EB-915W video projector (3200 ANSI lumens)

1 16:9 screen, 244 cm x 138 cm

Projector

Epson EB-915W video projector (3200 ANSI lumens)

Screen

1 16:9 screen, 244 cm x 138 cm

Furniture

Chairs and tables

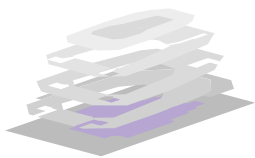
Wireless LAN

*Maximilian Oskar Bircher-Benner

This Swiss doctor and nutritional scientist developed the famous Bircher muesli and was considered a pioneer of wholefoods. Visit www.umweltarena.ch to find the original recipe as Bircher-Benner invented it.

Notes

Lower ground floor | SEMINAR ROOM 5 Fridolin Schuler*



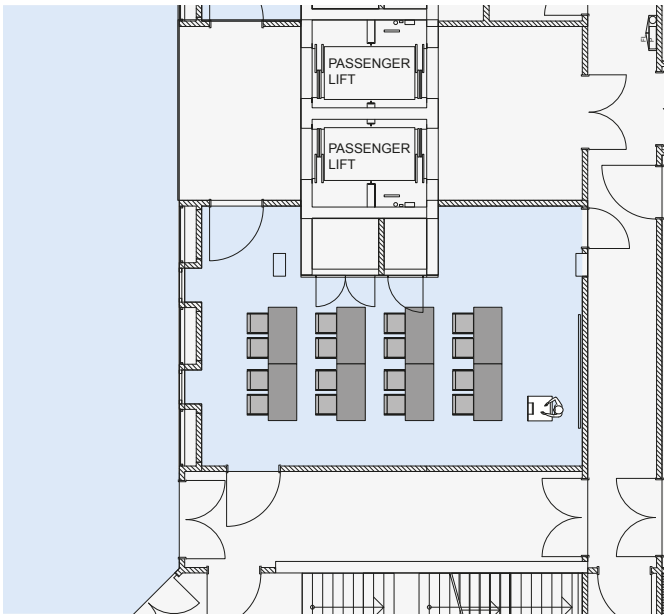
Suitable for training sessions and meetings

Room description	Seating options	Capacity
	Concert	40 people
	Seminar	20 people
	U-shaped formation	20 people
	Floor space	65 m ²
Special facilities	Indirect natural daylight	
Technical facilities	1 Panasonic PT-FW430 video projector (3500 ANSI lumens)	
	1 lectern	
	1 16:9 fixed frame projection screen, 270 cm x 150 cm	
	1 CD player	
	2 loudspeakers for background music (no voice announcement system)	
	1 DVD player	
	Projector/screen	
	1 Panasonic PT-FW430 video projector (3500 ANSI lumens)	
	1 16:9 fixed frame projection screen, 270 cm x 150 cm	
	Public address system	
	2 loudspeakers for background music (no voice announcement system)	
	1 CD player	
	1 lectern	
	1 DVD player	
	Furniture	
	Chairs and tables	
	Wireless LAN	

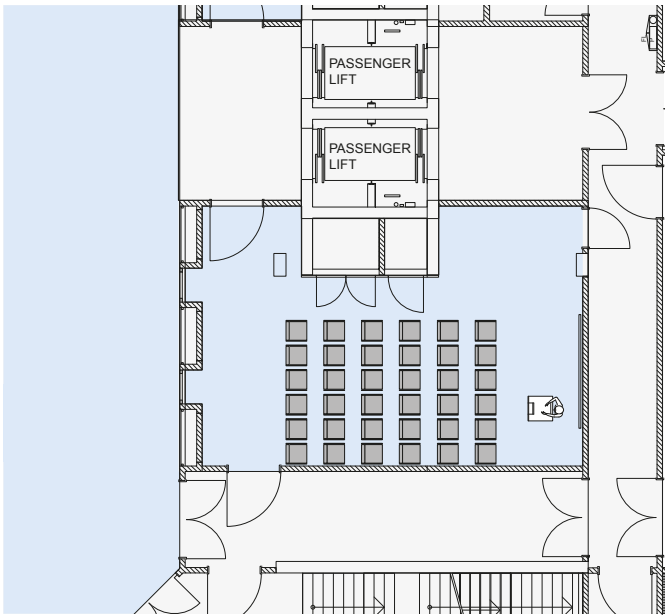
*Fridolin Schuler

This Swiss doctor pioneered the idea of healthy, low-cost, instant food. His idea was taken further by innovative entrepreneur Julius Maggi. Back in 1886 the company Maggi developed an instant pea and bean-based powdered soup mix.

SEATING EXAMPLES



Seminar seating

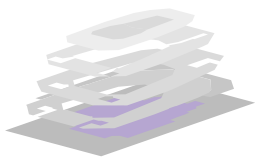


Concert seating

Notes

Notes section with horizontal lines for writing.

Lower ground floor | SEMINAR ROOM 6 Hans Maurer*



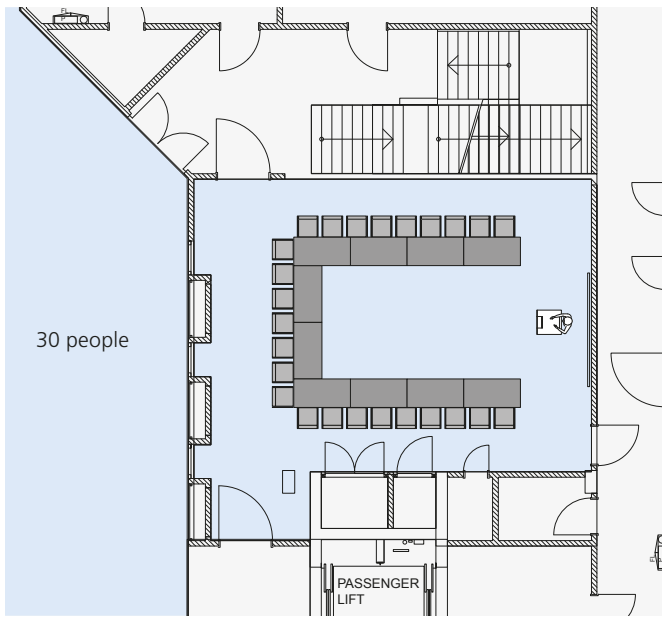
Classic seminar room for small meetings and courses, incl. facilities for serving refreshments

Room description	Seating options	Capacity
	Concert	70 people
	Seminar	40 people
	U-shaped formation	30 people
	Gala-style	45 people
	Banquet	60 people
	Floor space	85 m ²
Special facilities	Indirect natural daylight	
Technical facilities	1 Panasonic PT-FW430 video projector (3500 ANSI lumens)	
	2 loudspeakers for background music (no voice announcement system)	
	1 DVD player	
	1 CD player	
	1 presentation scaler switcher	
	Projector/screen	
	1 Panasonic PT-FW430 video projector (3500 ANSI lumens)	
	1 16:9 fixed frame projection screen, 270 cm x 150 cm	
	Public address system	
	2 loudspeakers for background music (no voice announcement system)	
	1 DVD player	
	1 CD player	
	1 presentation scaler switcher	
	Furniture	
	Chairs and tables	
	Wireless LAN	

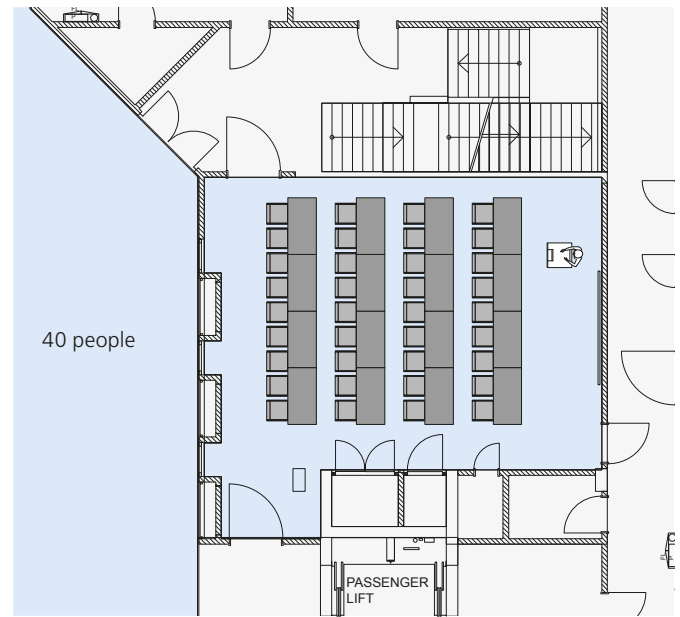
*Hans Maurer

The first WC with integrated bidet fountain was developed by Swiss inventor Hans Maurer and marketed under the name of Closomat from 1957 onwards.

SEATING EXAMPLES



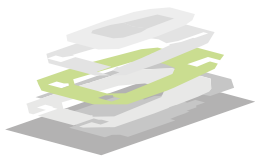
U-shaped formation



Seminar seating

Notes

First floor | CONFERENCE ROOM 7 Hippolyt Saurer*



Suitable for seminars, conferences or gala dinners

Room description	Seating options	Capacity
	Concert	350 people
	Seminar	180 people
	Banquet	300 people
	Gala dinner	180 people
	Floor space	370 m ² 1.8 m / 7.5 m (sloping ceiling)

Technical facilities	1 Panasonic PT-DZ6700 video projector (6000 ANSI lumens, Full HD)
	4 Arri LED Fresnel spotlights
	2 Fohhn Linea LX-100 line array loudspeaker systems
	1 lectern incl. gooseneck microphone
	1 Fohhn XS-20 subwoofer
	1 iPad media control system
	1 Sennheiser SKM500 hand-held microphone or 1 Sennheiser HSP-2 wireless headset
	Projector/screen
	1 Panasonic PT-FW430 video projector (3500 ANSI lumens)
	1 16:9 fixed frame projection screen, 270 cm x 150 cm
	Public address system
	1 lectern incl. gooseneck microphone
	2 Fohhn Linea LX-100 line array loudspeaker systems
	1 Fohhn XS-20 subwoofer
	1 iPad media control system
	1 Sennheiser SKM500 hand-held microphone or 1 Sennheiser HSP-2 wireless headset

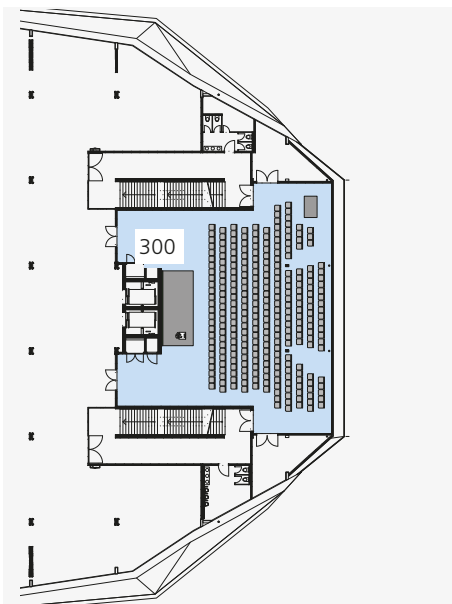
Technical facilities continued overleaf →

*Hippolyt Saurer

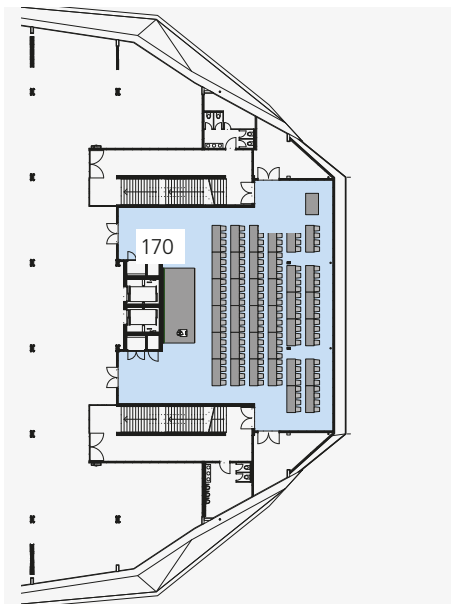
This inventor of the first diesel engine for motor vehicles was the son of Adolph Saurer and co-owner of the commercial vehicle manufacturing firm Saurer, which built trucks and mechanical looms. Saurer AG has been a subsidiary of OC Oerlikon Corporation AG in Pfäffikon since the beginning of 2007.

First floor | CONFERENCE ROOM 7 Hippolyt Saurer

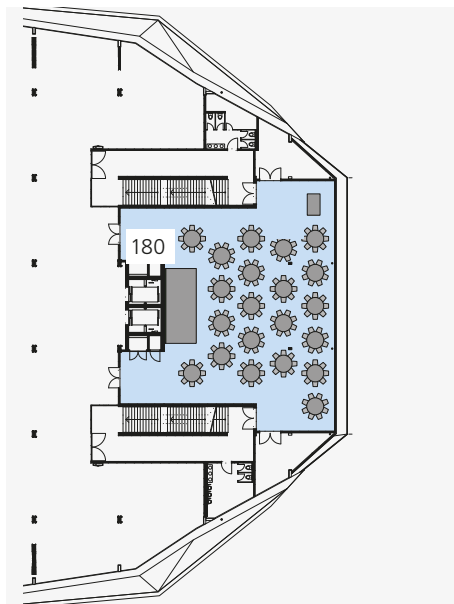
SEATING EXAMPLES



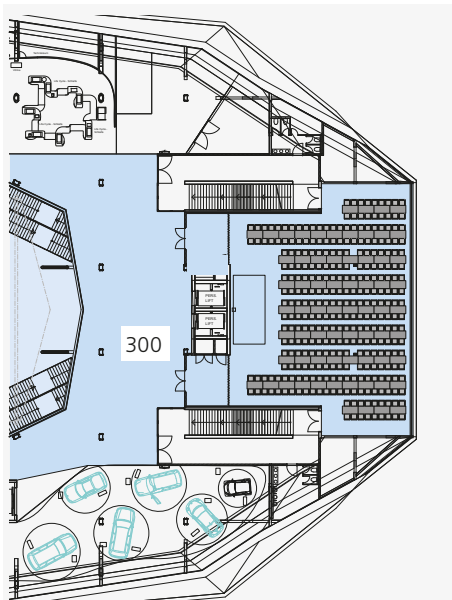
Concert seating



Seminar seating



Gala-style seating

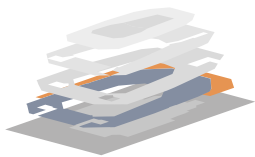


Banquet seating

Technical facilities	Lectern
	1 lectern incl. gooseneck microphone
	Stage (standard size: 20 m²)
	Staging units 2 x 1 m, height 40 cm, incl. stairway
Special facilities	Furniture
	Chairs and tables
	Wireless LAN
Special facilities	Incl. 2 side rooms, each measuring 18 m²
	Sloping ceiling (7.5 m/1.8 m)
	Daylight/blackout facilities
	Conference room foyer (160 m²) which can be used for aperitif receptions, breaks and stand-up buffet lunches

Notes	

Top floor | ROOF TERRACE



Roof terrace for alfresco aperitifs

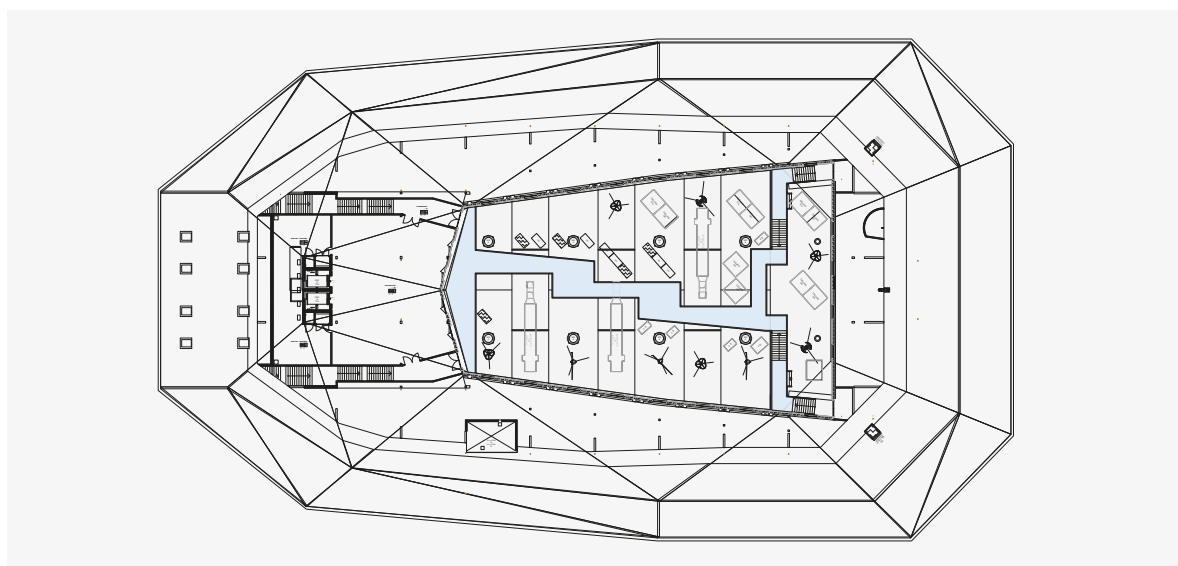
Outdoor area

Floor space

780 m²

Wireless LAN

The outdoor areas are suitable for open-air receptions where guests can mingle over aperitifs



First floor | INDOOR GARDEN



Suitable for aperitif receptions for up to 120 people

Ground floor | KLIMA RESTAURANT



The KLIMA restaurant is run by dine&shine Event Catering. It has "Goût Mieux" and ISO 14001 certification and works with ProSpecieRara, the IUNR (Institute of Natural Resource Sciences) and the ZHAW (Zurich University of Applied Sciences) in order to run the catering services as sustainably as possible.

Carbon-neutral | 100% renewable energy, July 2017

www.umweltarena.ch
www.facebook.com/umweltarena



Patronat: Kanton Aargau. Mit Unterstützung der W. Schmid Projekte AG.
Hauptpartner:

